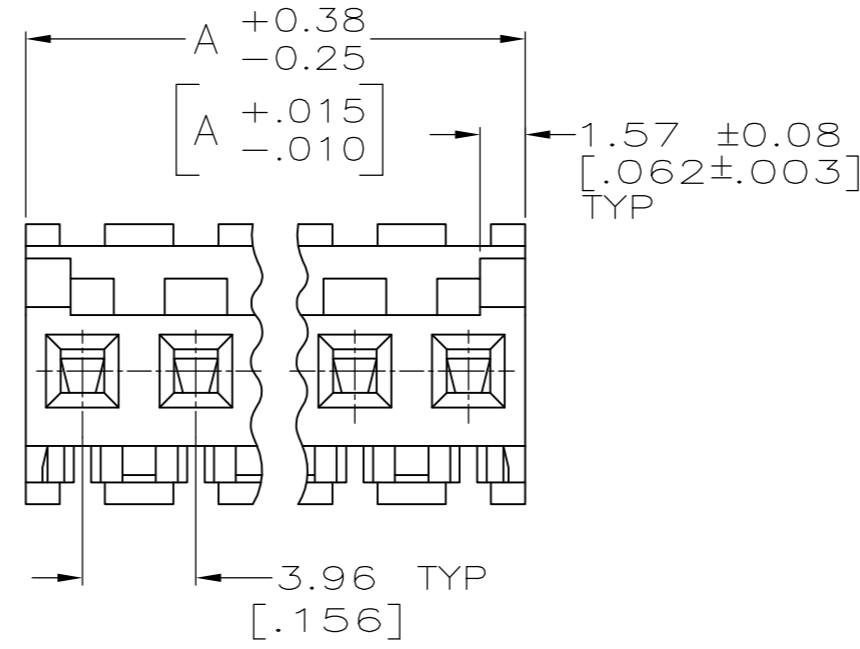
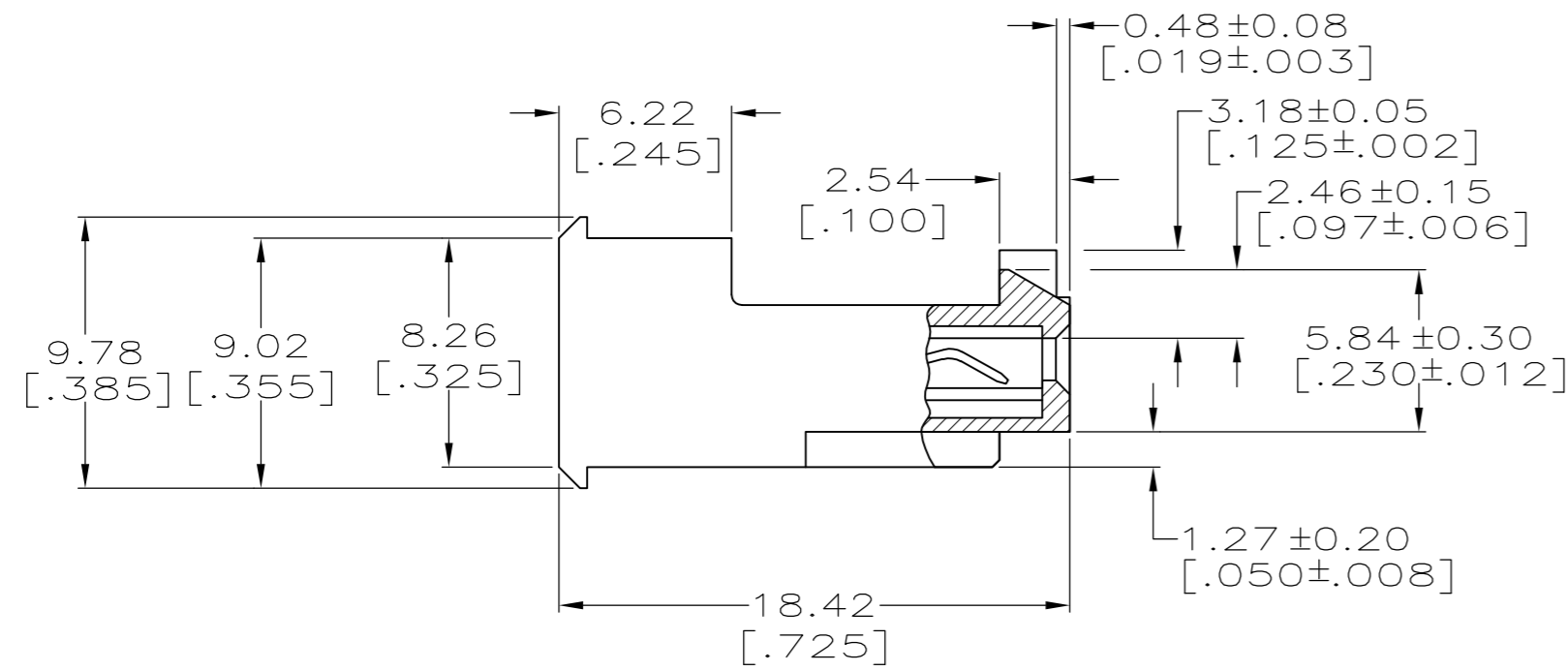
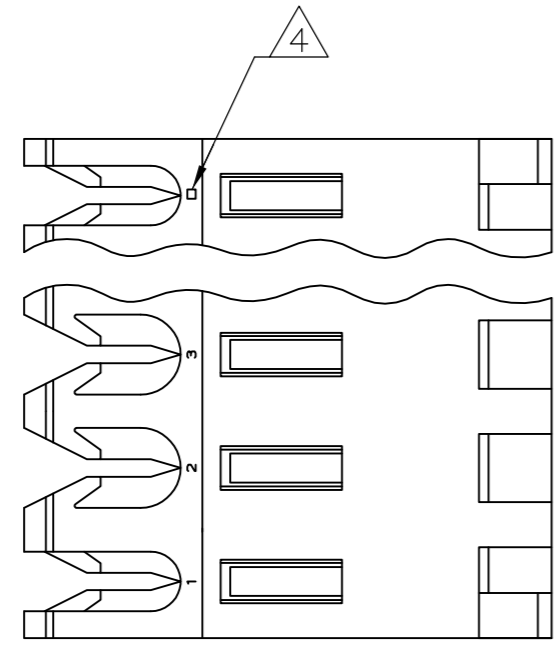


THIS DRAWING IS UNPUBLISHED. RELEASED FOR PUBLICATION
 © COPYRIGHT - By - TE CONNECTIVITY ALL RIGHTS RESERVED.

LOC	DIST	REVISIONS					
CM	00	P	LTR	DESCRIPTION	DATE	DWN	APVD
		L2		REVISED PER ECR-15-006687	21OCT2015	NK	NL



1 MATERIAL: CONNECTOR - NYLON UL94V-2 (ORANGE).
 CONTACTS - 0.00076[.000030] GOLD THK OR 0.00008[.000003] MIN THK
 GOLD FLASH OVER 0.00068[.000027] THK PALLADIUM NICKEL,
 PER TE CONNECTIVITY'S DISCRETION. IN CONTACT AREA WITH MATTE TIN FOR
 -2 THRU -28, MATTE WHISKER MITIGATED TIN FOR
 3-644718-2 THRU 4-644718-4 OVER NICKEL UNDERPLATE.

- 2 CONTACTS ACCEPT 18 AWG WIRE WITH 2.41[.095] MAX INSULATION DIAMETER.
- 3 CONTACTS MUST ACCEPT 1.14±0.03[.045±.001] POST AND REMAIN LOCKED IN POSITION.
- 4 IDENTIFICATION NUMBER FOR LAST CIRCUIT MAY NOT APPEAR ON ALL ASSEMBLIES.
- 5 DIMENSIONS IN BRACKETS ARE IN INCHES.
- 6 HOUSING FEATURES ARE: FEED-THRU WITH LOCKING RAMP AND POLARIZING TAB.
- 7 OBSOLETE PARTS: OBSOLETE CIS STREAMLINING PER D.RENAUD/D.SINISI

YES	55.47[2.184]	14	4-644718-4
YES	51.51[2.028]	13	4-644718-3
YES	47.55[1.872]	12	4-644718-2
YES	43.59[1.716]	11	4-644718-1
YES	39.62[1.560]	10	4-644718-0
YES	35.66[1.404]	9	3-644718-9
YES	31.70[1.248]	8	3-644718-8
YES	27.74[1.092]	7	3-644718-7
YES	23.77[.936]	6	3-644718-6
YES	19.81[.780]	5	3-644718-5
YES	15.85[.624]	4	3-644718-4
YES	11.89[.468]	3	3-644718-3
YES	7.92[.312]	2	3-644718-2
NO	55.47[2.184]	14	1-644718-4
NO	51.51[2.028]	13	1-644718-3
NO	47.55[1.872]	12	1-644718-2
NO	43.59[1.716]	11	1-644718-1
NO	39.62[1.560]	10	1-644718-0
NO	35.66[1.404]	9	644718-9
NO	31.70[1.248]	8	644718-8
NO	27.74[1.092]	7	644718-7
NO	23.77[.936]	6	644718-6
NO	19.81[.780]	5	644718-5
NO	15.85[.624]	4	644718-4
NO	11.89[.468]	3	644718-3
NO	7.92[.312]	2	644718-2
OBSOLETE			
NO	55.47[2.184]	14	LEADFREE DIM A NO. OF CIRCUITS PART NO.

THIS DRAWING IS A CONTROLLED DOCUMENT.		DWN K. WHITAKER 15MAR2004		
DIMENSIONS: mm [INCHES]		CHK D. BOSSI 15-MAR-04		
TOLERANCES UNLESS OTHERWISE SPECIFIED:		APVD D. BOSSI 15-MAR-04	NAME	
0 PLC ± -		PRODUCT SPEC	MTA 156 CONNECTOR ASSEMBLY, 18 AWG, STANDARD	
1 PLC ± -		APPLICATION SPEC	SIZE	CAGE CODE
2 PLC ± 0.13 [.005]		108-1051	A2	00779
3 PLC ± -		114-1020	DRAWING NO	RESTRICTED TO
4 PLC ± -		WEIGHT	C=644718	-
ANGLES ± 0°30'		CUSTOMER DRAWING	SCALE	SHEET
FINISH			4:1	1 of 1
MATERIAL			REV	L2